



Spooky Night SS-PL 14
Simply Shelly
Stitch Guide by Joyce Gresh

Spooky Night SS-PL 14
Simply Shelly
Stitch Guide by Joyce Gresh

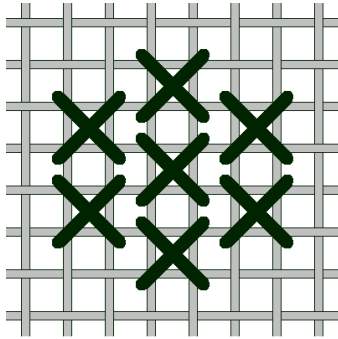
Bats:

Diagonal Satin

Thread: Frye Werks FT11

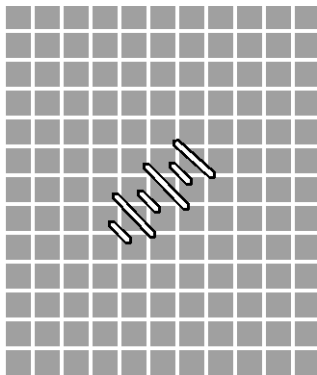
- Don't stitch the white outline

Owl Forehead:



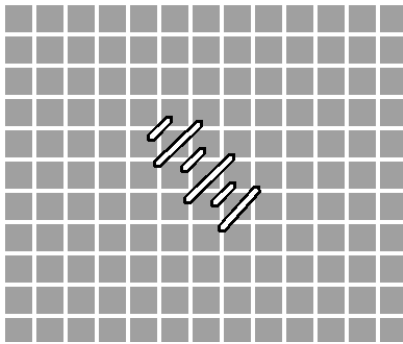
Thread: Wildflowers 234

Owl Left Ear:



Threads: Treenway Cord Daffodil, Wildflowers 234, Valdani 205

Owl Right Ear:



Threads: Treenway Cord Daffodil, Wildflowers 234, Valdani 205

Left Wing Edge:

Diagonal Satin over 2 working from the outside towards the owl body

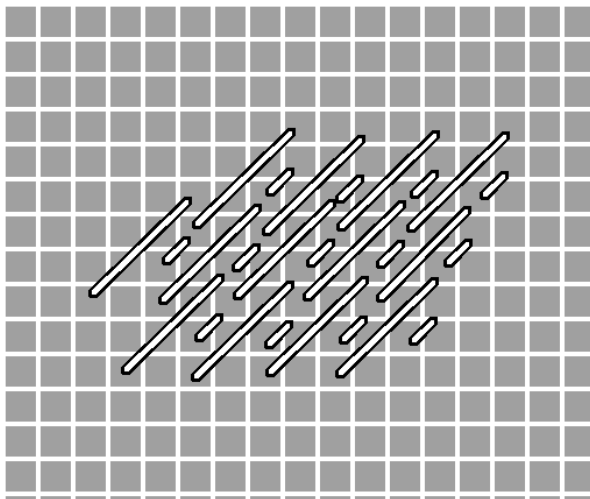
Thread: Valdani 205

Right Wing Edge"

Diagonal Satin over 2 working from the outside towards the owl body

Thread: Treenway Cord Daffodil

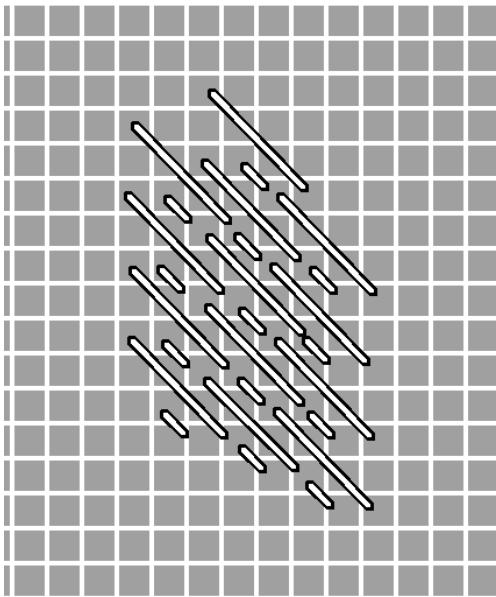
Left Side Body:



Thread: Valdani 205, Wildflowers 234, Silk Lame Braid SP169

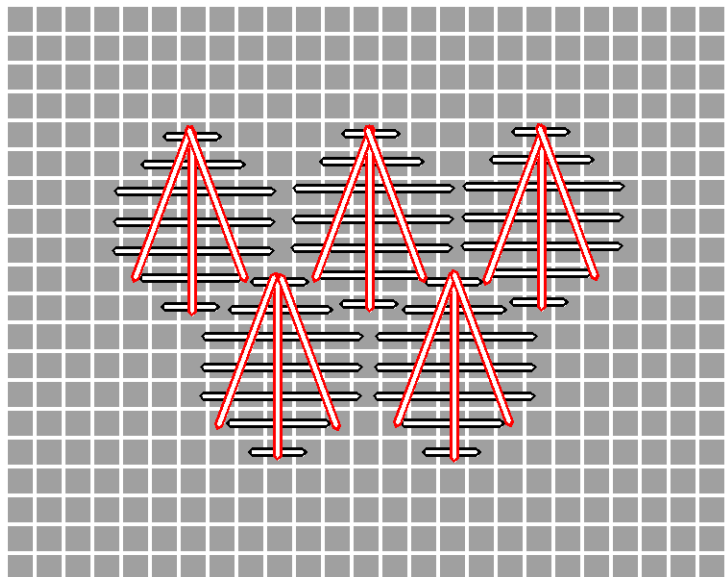
NOTE: Silk Lame is the short stitch

Right Side Body:



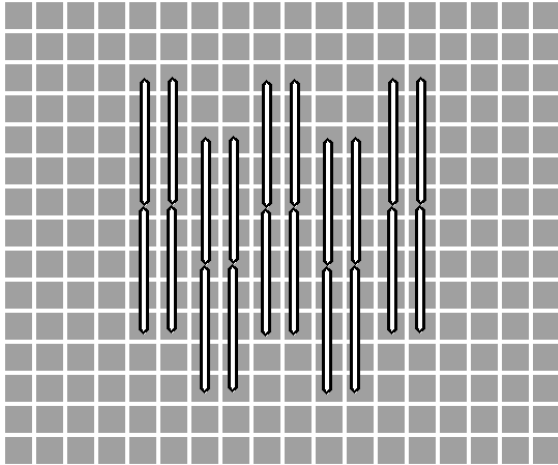
Thread: Valdani 205, Wildflowers 234, Silk Lame Braid SP169
NOTE: Silk Lame is the short stitch

Center Body:



Thread: Black Line – Weeks Dye Works 2203 (4 ply)
Red Lines – Silk Lame Braid SP220

Owl Eyes: (White Section)

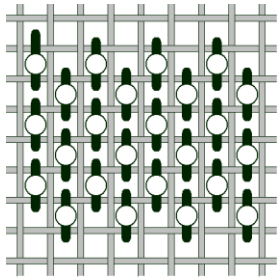


Thread: Wildflower 100

Pupil for left eye
Attach spider charm

Right Eye (black line)
Continental
Thread: Fyre Weeks FT11

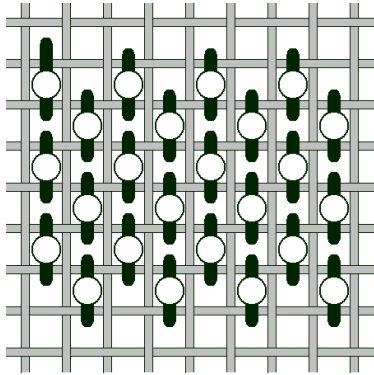
Border around eyes follow colors



** Circle represent bead
Clear Beading Thread
Beads: Size 14/15 - 368, 460D. 574

Nose
Pad the center of the nose with horizontal stitches
Diagonal Stitch to meet in the middle to form beak
Thread: Valdani 72

Owl Claws: (bead after the bullion knots are created, which is illustrated with pumpkin tendrils)

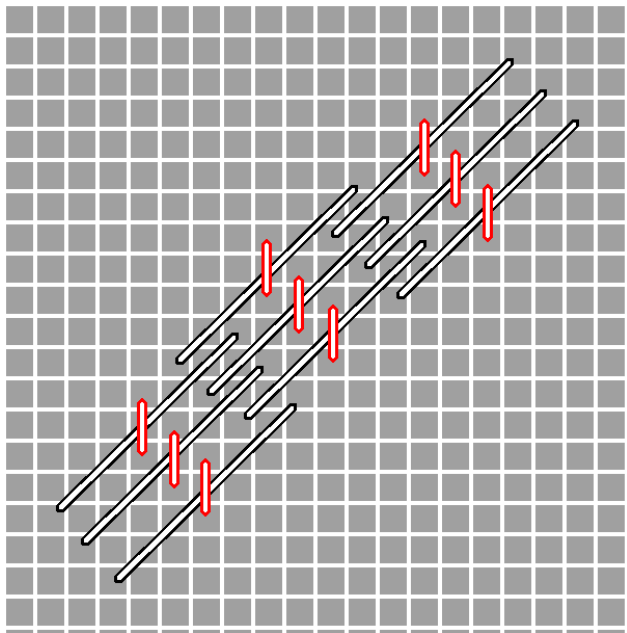


** circle represents bead

Beads: Size 11 - 422, 423, 634

Clear Beading Thread

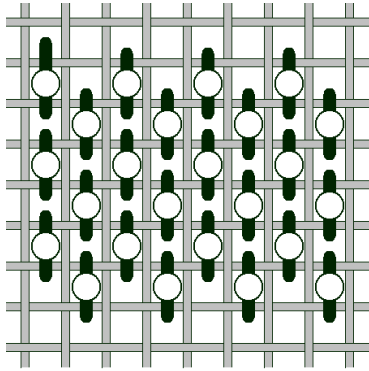
Moon:



Thread: Black Lines – Sparkle Rays PS03

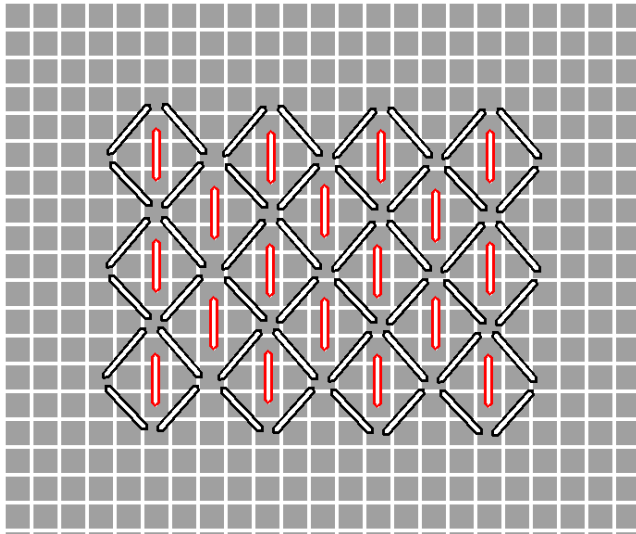
Red Lines – Treenway Cord Daffodil

Moon Shadow on the right and also on the left: Look carefully you will see a slight difference in color



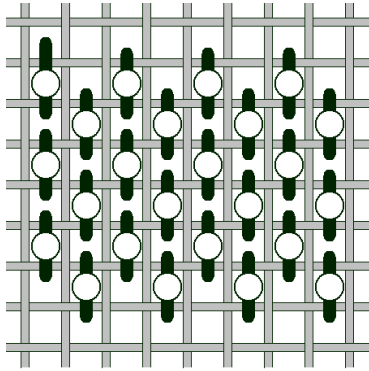
** Circle represents bead
Thread: Clear Beading Thread
Bead: Size 14/15 - 131

Top Pumpkin: (1st, 3rd and 5th sections) follow color changes – do not stitch half stitches when changing colors



Thread: Black Lines – Soie Cristale 3024, 3026, 4013 (4 ply)

Red line in diagram



** Circle represents bead

Thread: Clear Beading Thread

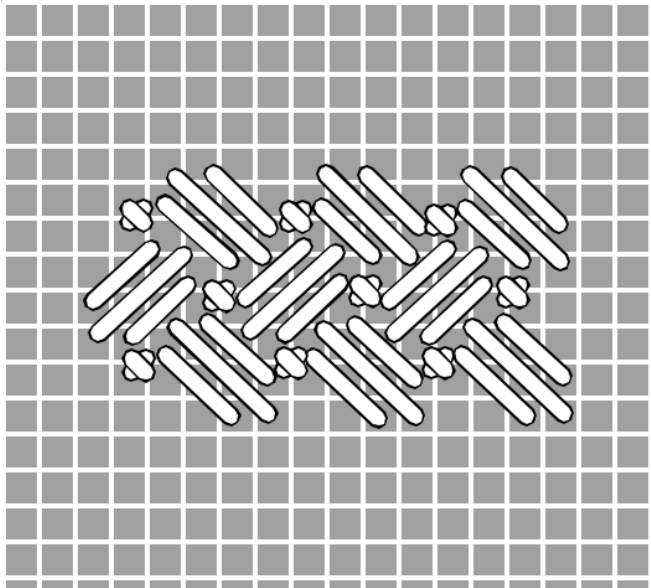
Bead: Size 14/15 - 422, 423, 634

Pumpkin Segment lines on both pumpkins

Continental Stitch

Thread: Valdani 302, 196

Bottom pumpkin (2nd and 4th section) follow color changes – do not stitch half stitches when changing colors



Note x represents bead

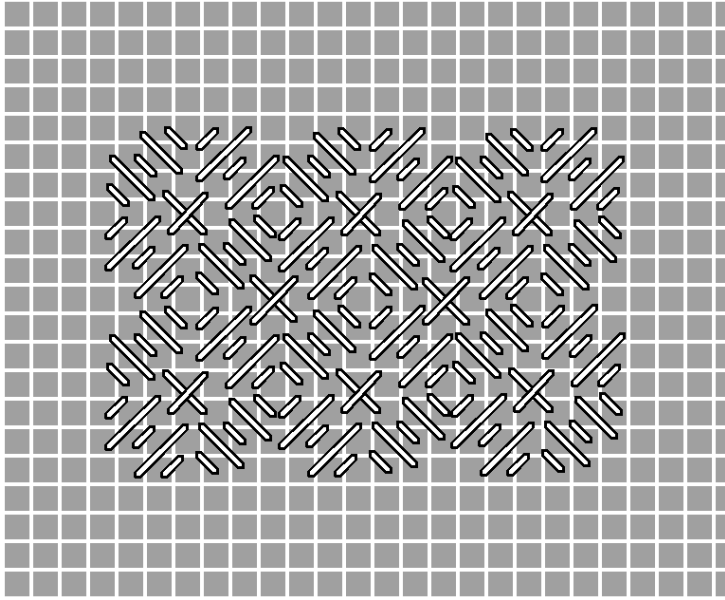
Thread: Soie Cristale 3024, 3026, 4013 (4 ply)

Bead: Size 14/15 - 422, 423, 634 Clear Beading Thread

Mouth, Tooth and Eyes:

Diagonal Satin Thread: Frye Werks FT11, Silk Lame Braid SP191, 219, Threadworxs Metallic 711454, Neon Rays N02

Bottom Pumpkin: (1st, 3rd section) follow color changes – do not stitch half stitches when changing colors

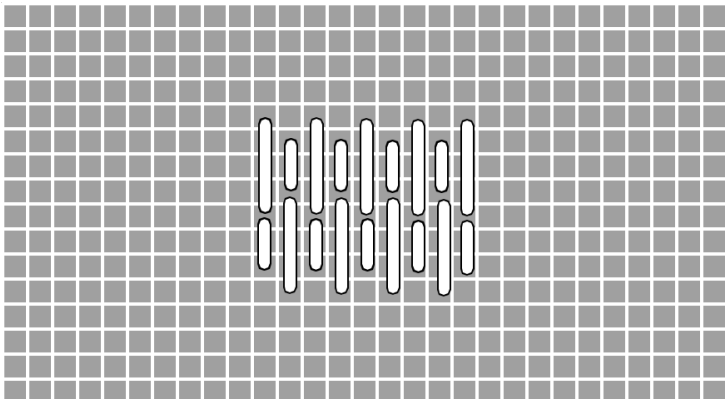


*** x represents bead

Thread: Soie Cristale 3024, 3026, 4013 (4 ply)

Bead: Size 14/15 - 422, 423, 634 Clear Beading Thread

Bottom Pumpkin: (2nd, 4th section)



*** Small stitch represents bead

Thread: Soie Cristale 3024, 3026, 4013(4 ply)

Bead: Size 14/15 - 422, 423, 634 Clear Beading thread

Mouth and Eyes:

Diagonal Satin

Thread: Frye Werks FT11, Silk Lame Braid SP191, 219, Threadworx Metallic 711454, Neon Rays N02

Open Mouth:

Continental Stitch

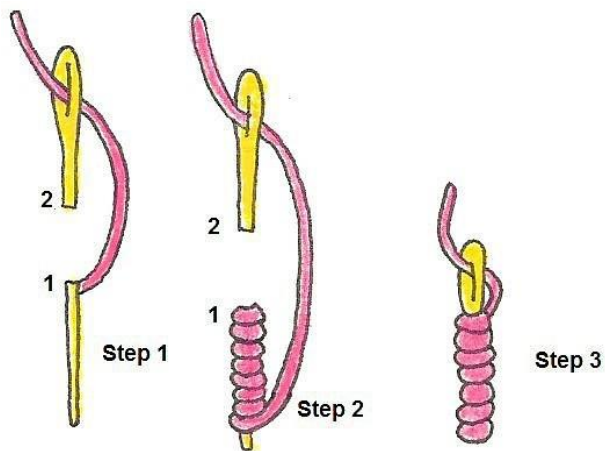
Thread: Silk Lame Braid SP219, SP191

Pumpkin Tendrils:

Continental Stitch

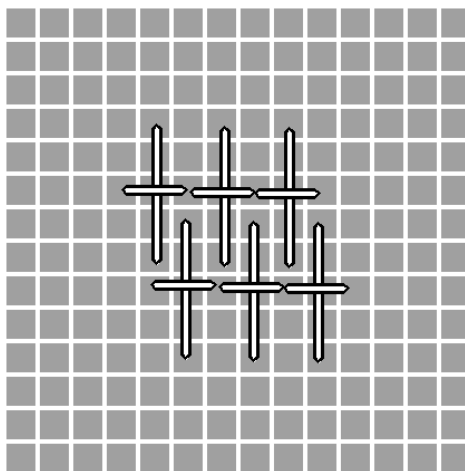
Thread: Weeks Dye Weeks 2202a (4 ply)

Stems:



Thread: Valdani 196

Large Tree:



Thread: Valdani 8113

** Do not stitch the white outline

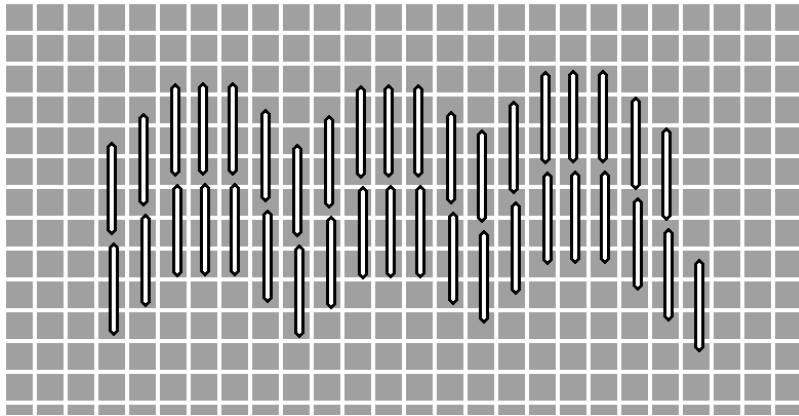
Small Tree, dark line divider in the ground and fence:

Continental Stitch

Thread: Valdani 8113

** Do not stitch the white outline

Ground:



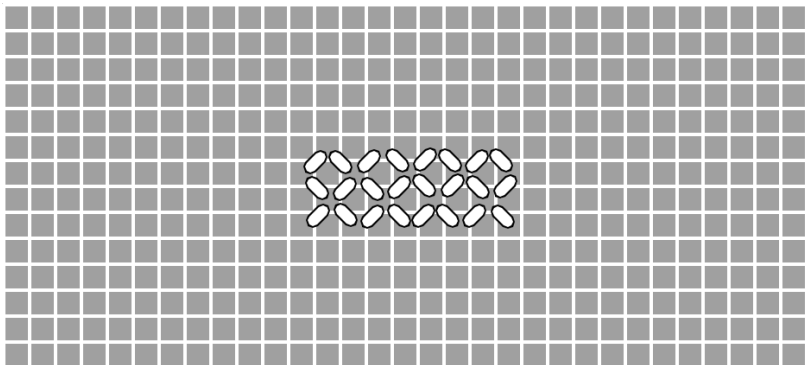
Thread: Weeks Dye Works 2104 (4 ply)

Leaves:

Diagonal Satin meeting in the middle to form a leaf

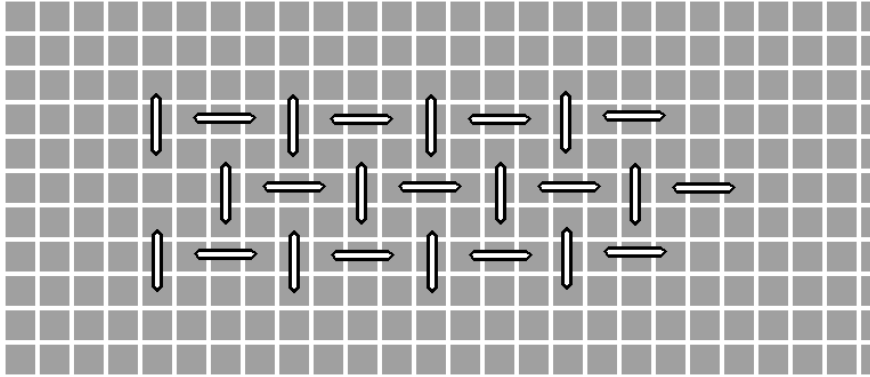
Ribbon: Treenway 3.5mm 314 and Green Tea

Grave Stones: Do not stitch white lines



Thread: Soie Cristale 1046 (3 ply)

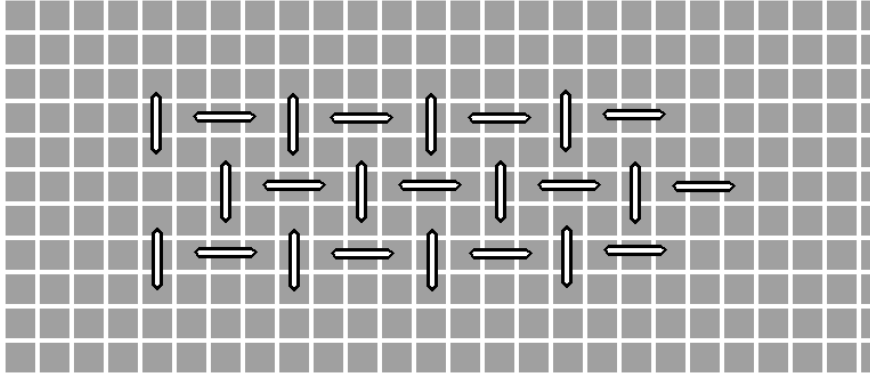
Top Background and behind the top pumpkin:



** Stitch over the web in the upper left corner

Thread: Valdani 108

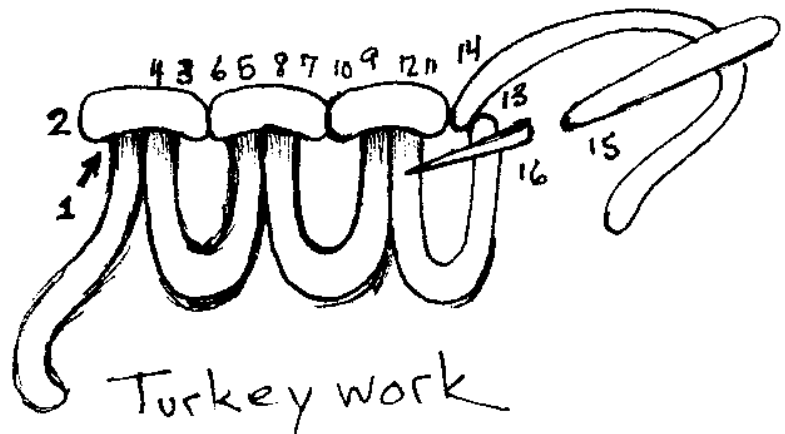
Shadow behind the bottom pumpkin



Thread: Valdani 112

Spider line:
Continental Stitch
Neon Rays N02

Spider:



Thread: Watercolours 209 (1 ply)

Note when cutting the turkey to form the spider cut the sides shorter and leave the middle longer

Spider Eyes:

Attach Size 11 bead #402 with Clear Beading Thread

Attach the bead so the hole faces up so it looks like an eye

Spider Legs: Do not stitch the white lines

Continental Stitch

Thread: Frye Werks FT 11

Upper Spider Web

I got the webbing from a craft store. Cut it to form the web and couched it down.

Happy Stitching

Fyre Werks

FT 11 Black

Neon Rays

N02 White

Silk Lame Braid

SP169 Blue Bell

SP191 Golden Rod

SP220 Lemon Grass

SP219 Sunset Gold

Sparkle Rays

PS03 Lemon

Soie Cristale

1046 Brown Gray

3024 Bright Orange

3026 Bright Orange

4013 Lemon Yellow

Treenway Silks Cord

Daffodil

Treenway 3.5mm Ribbon

65 Roses Green Tea

314 Green

Threadworkx Metallic

711454

Weeks Dye Works

2104 Deep Sea

2203 Chartreuse

2202A Apple Pucker

Watercolours

209 Iris

Wildflowers

100 Snow White

234 Celestial Blue

Valdani #8

72 Peach Orange

108 Dusky Navy

112 Dusty Blue

196 Golden Brown

205 Soft Sky Blue

302 Rich Brick

8113 Black Dark

Sundance #11 Beads

422 Pearl Yellow

423 Tangerine Dream

634 Rainbow Gold

402 White

Sundance #14/15 Beads

131 Clear

368 Steel Grey

422 Pearl Yellow

423 Tangerine Dream

634 Rainbow Gold

574 Purple

460D Purple

Clear beading thread

