

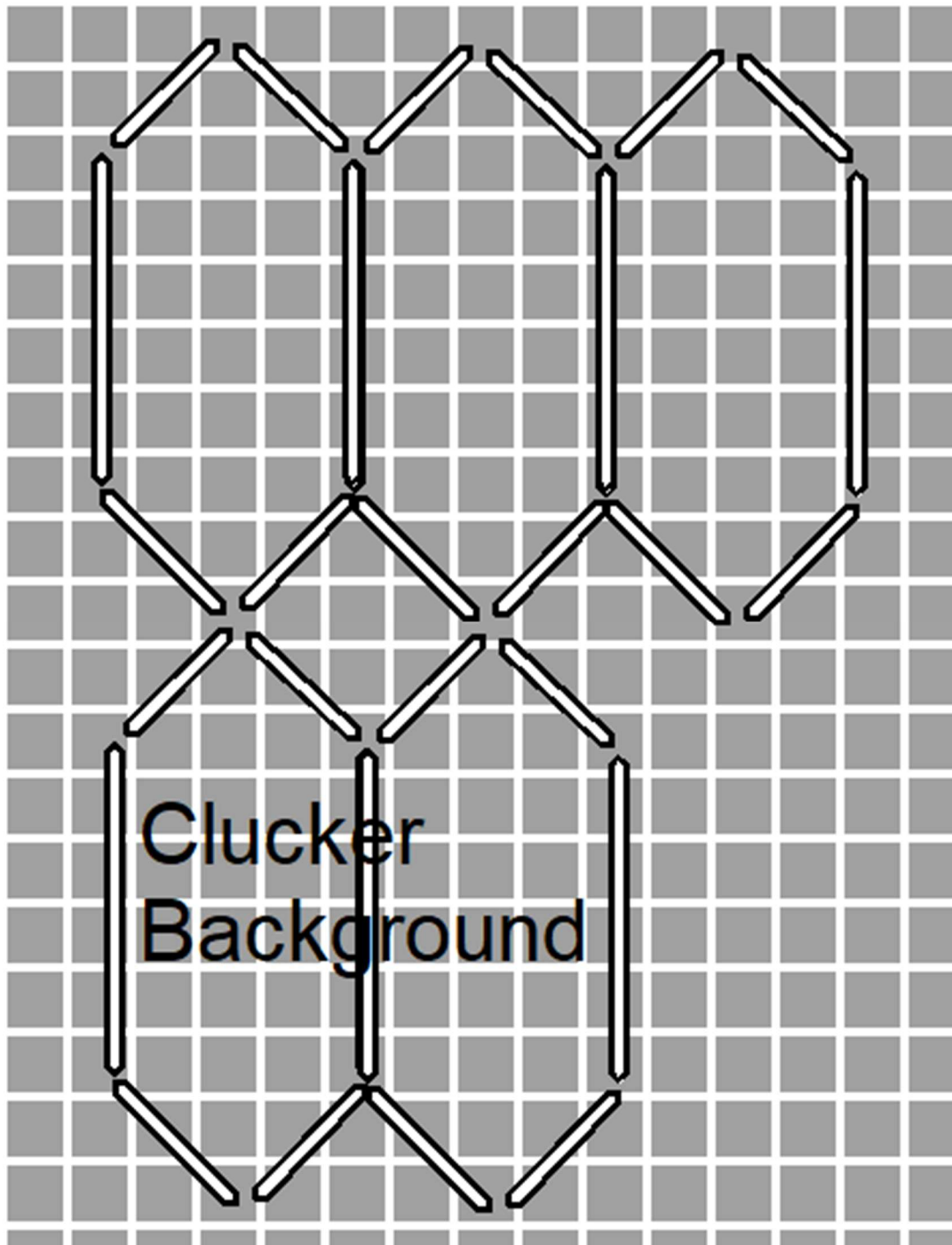
Mother Cluckers Thread List

Classic Colorworks	Love Dove	1 skein
Eyelash	RE01	2 cards
Eyelash	RE16	1 card
Frosty Rays	PY071	1 card
Mandarin Floss	M802, M842, M812	1 card each
Neon Rays	100	1 card
Panache	PN28	1 card
River Silk 4mm	101	1 card
Sequins	109	1 Pkg
Soie Cristale	0011	2 skeins
Straw Silk	1040	1 skein
Sundance 14/15	716, 571, 408	1 tube each
Sundance 11	408	2 tubes
Threadworx	11231, 1122	1 skein each
Waterlilies	121	1 skein
Weeks Dye Works cotton	1237, 1228a	1 skein each
Wildflowers	181, 265	1 skein each
Embellishment Kit	(5) Curlers, (4) Black eyes,	

Background

Thread: Soie Cristale 0011 – 2 ply

Stitch: See Graph



Cover the painted dots on the canvas with sequin #109



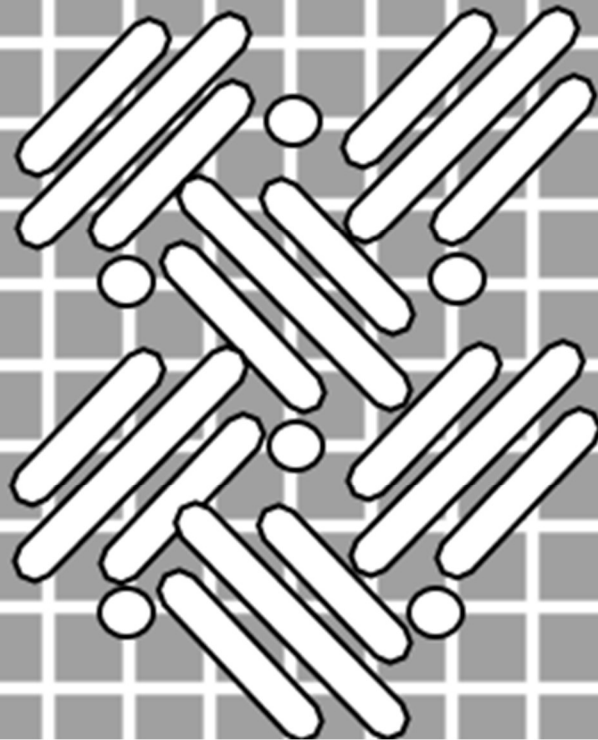
Bar Top

Thread: Waterlilies 121 – 2 ply

Beads: Sundance 14/15 #716, #571

Stitch: Criss Cross Hungarian

Criss Cross Hungarian with Bead

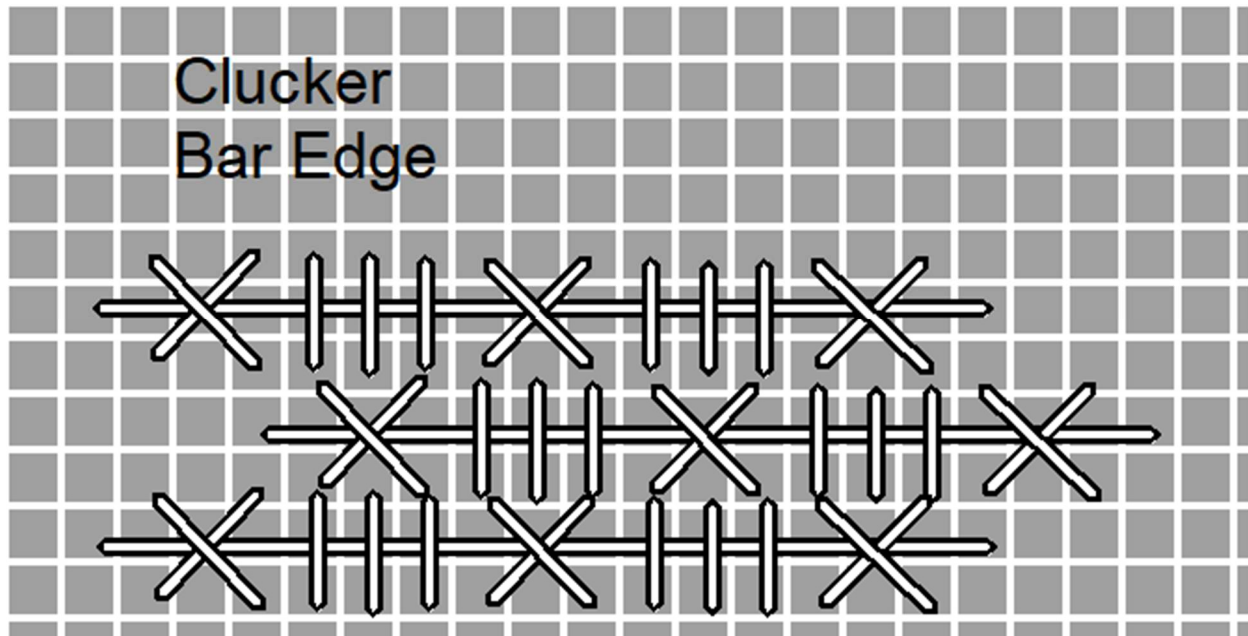


Place the beads using the different colors #716 and #571 randomly.

Bar Edge

Thread: Straw Silk 1040 Jade, Wildflowers 181 Ocean Breeze

Stitch: See Graph



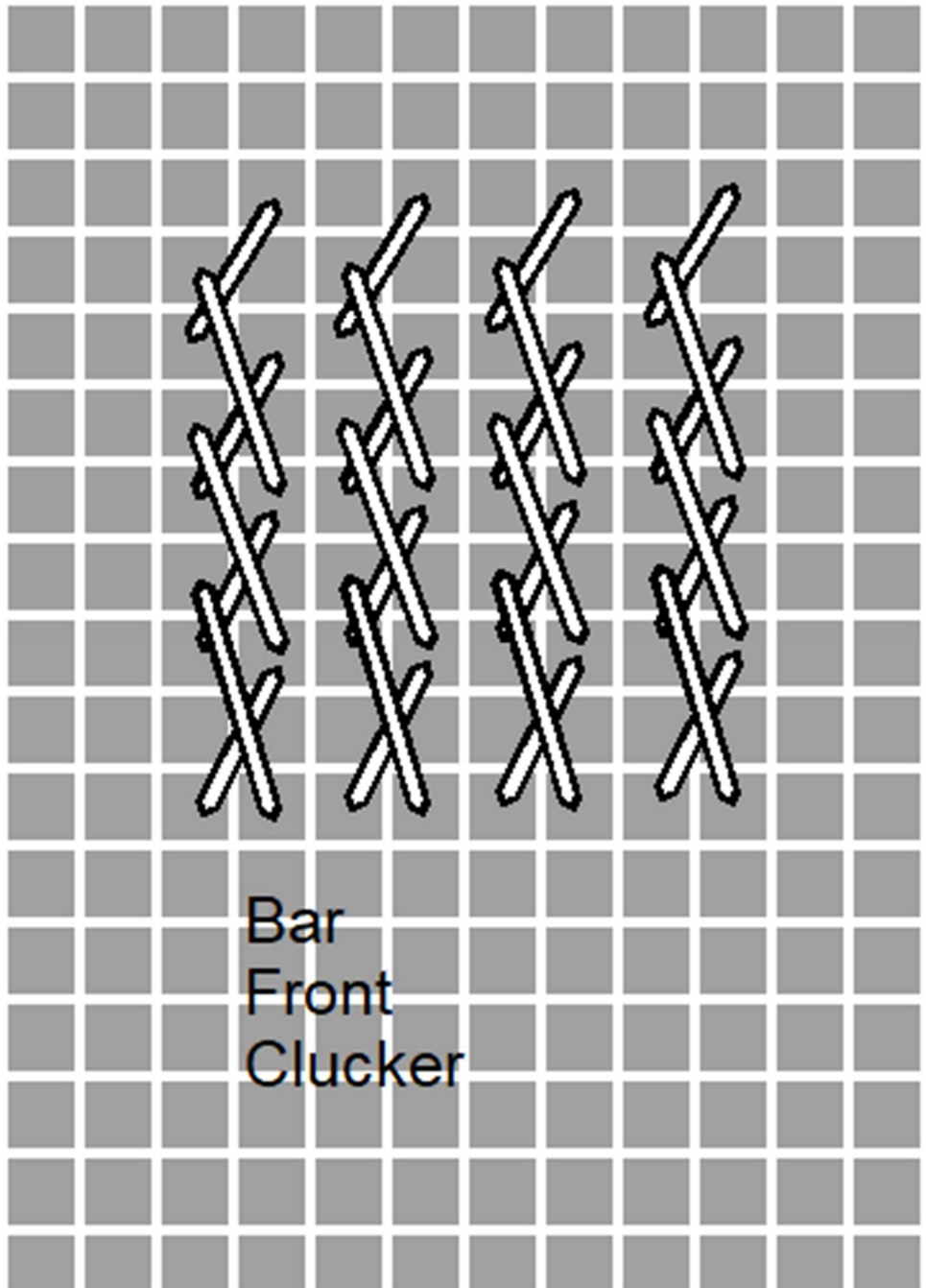
Lay the tram stitch first, using the Straw Silk. Place the other stitches over it.



Bar Front

Thread: Weeks Cinnamon Twist 1288a – 2 ply, Swiss Chocolate 1237 – 2 ply

Stitch: Bar Front Cluckers

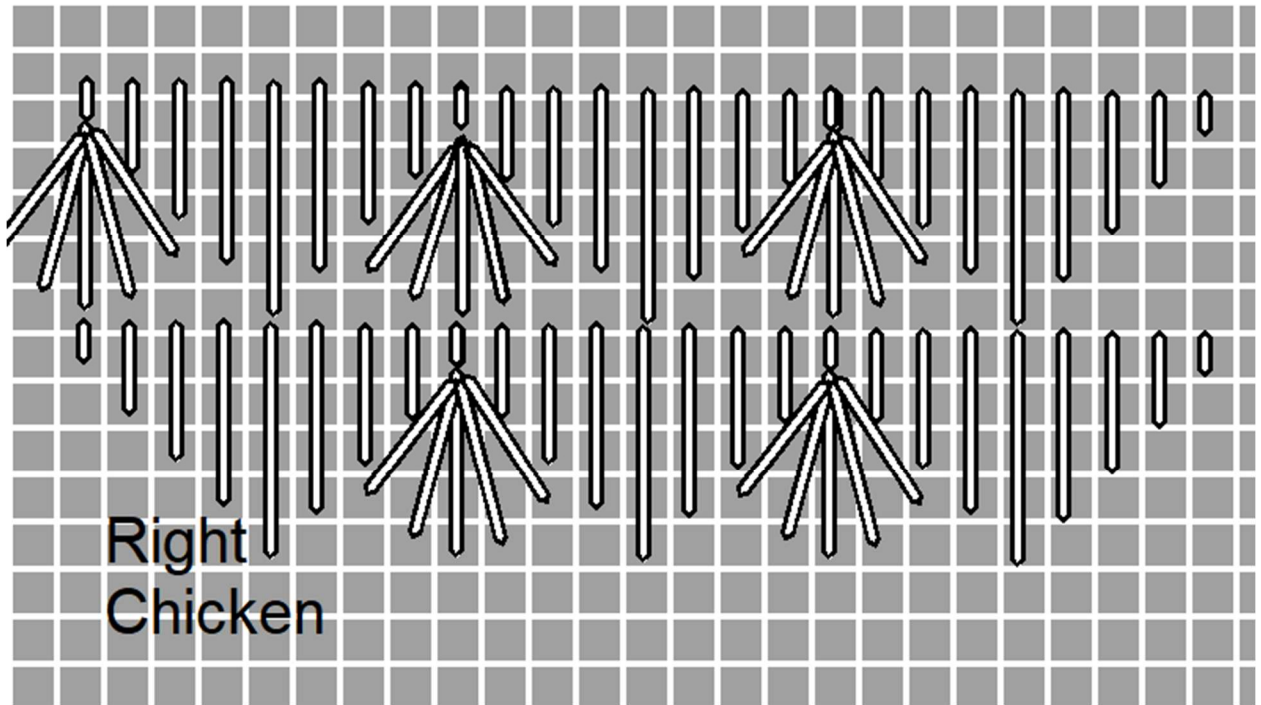


Place the short stitches first (Swiss Chocolate). Place long stitches over short stitches (Cinnamon Twist).

Right Chicken Body

Thread: Classic Colorworks Love Dove, Wildflower 265

Stitch: See Graph



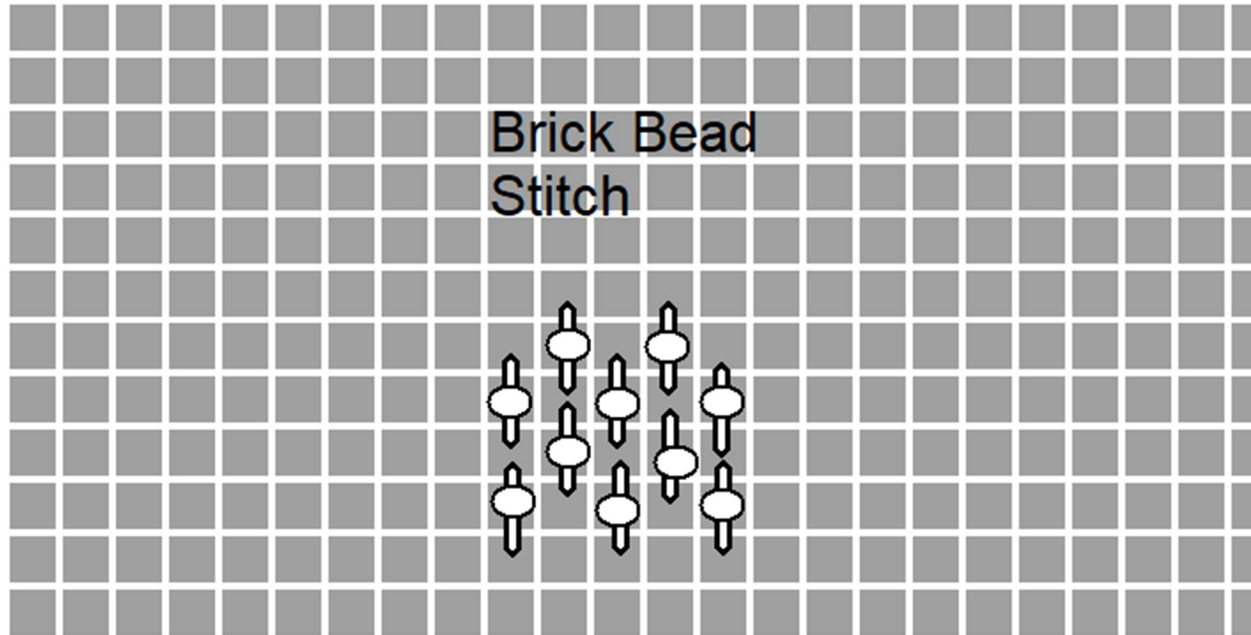
Use the Wildflowers on the vertical stitches and 2 ply of the Classic Colorworks on the diagonal stitches.

Faces

Forehead

Thread: Beading Thread and size 14/15 bead 408

Stitch: Brick Beading Thread



Right clucker – area below beak

Thread: Beading Thread and size 11 bead 408

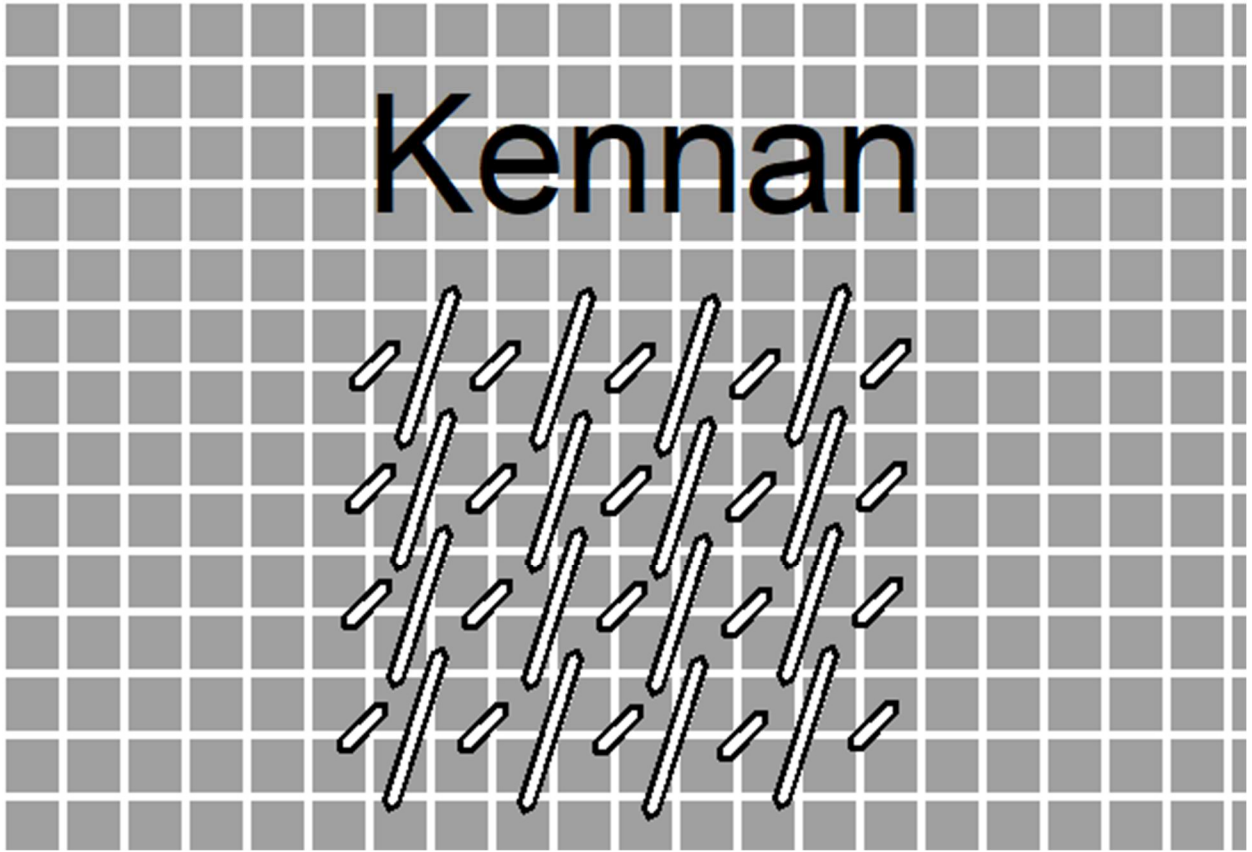
Stitch: Brick Beading Thread

Remaining red face area

Thread: Frosty Rays YO71 (pull out the metallic)

Bead: Sundance Size 14/15 #408

Stitch: Kennan with a Bead



Wattle

Thread: Frosty Rays YO71 (pull out the metallic)

Bead: Sundance Size 11 #408

You will also need a 4" section of a drinking straw.

Pull out the metallic thread from the Frosty Rays, thread up a 6-8" piece and knot the end. Pull up through the canvas, take the needle out and insert the straw into the tube of Frosty Rays. Load it up with the loose beads and re-thread up and put down into the canvas where the wattle goes. Tack down with red beading thread or red thread. See the picture next page.



Knuckles (Wing Tips?)

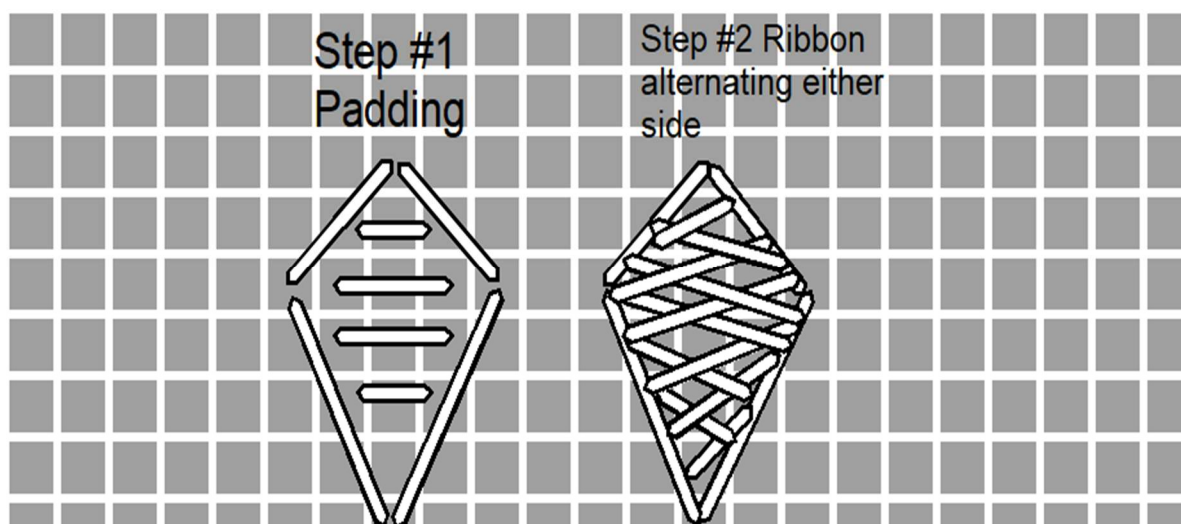
Thread: Threadworkx 1123/1122 blend – 4 plys

Stitch: Padded Satin final stitch should be horizontal

Beaks

Thread: Riversilk 101, yellow thread from your stash for padding

Stitch: See Diagram below



Mother Cluckers

Eyes

Thread: Panache PN28

Stitch: Tent

Embellishment: Black eyes

Hair

Thread: Eyelash RE01 and RE16

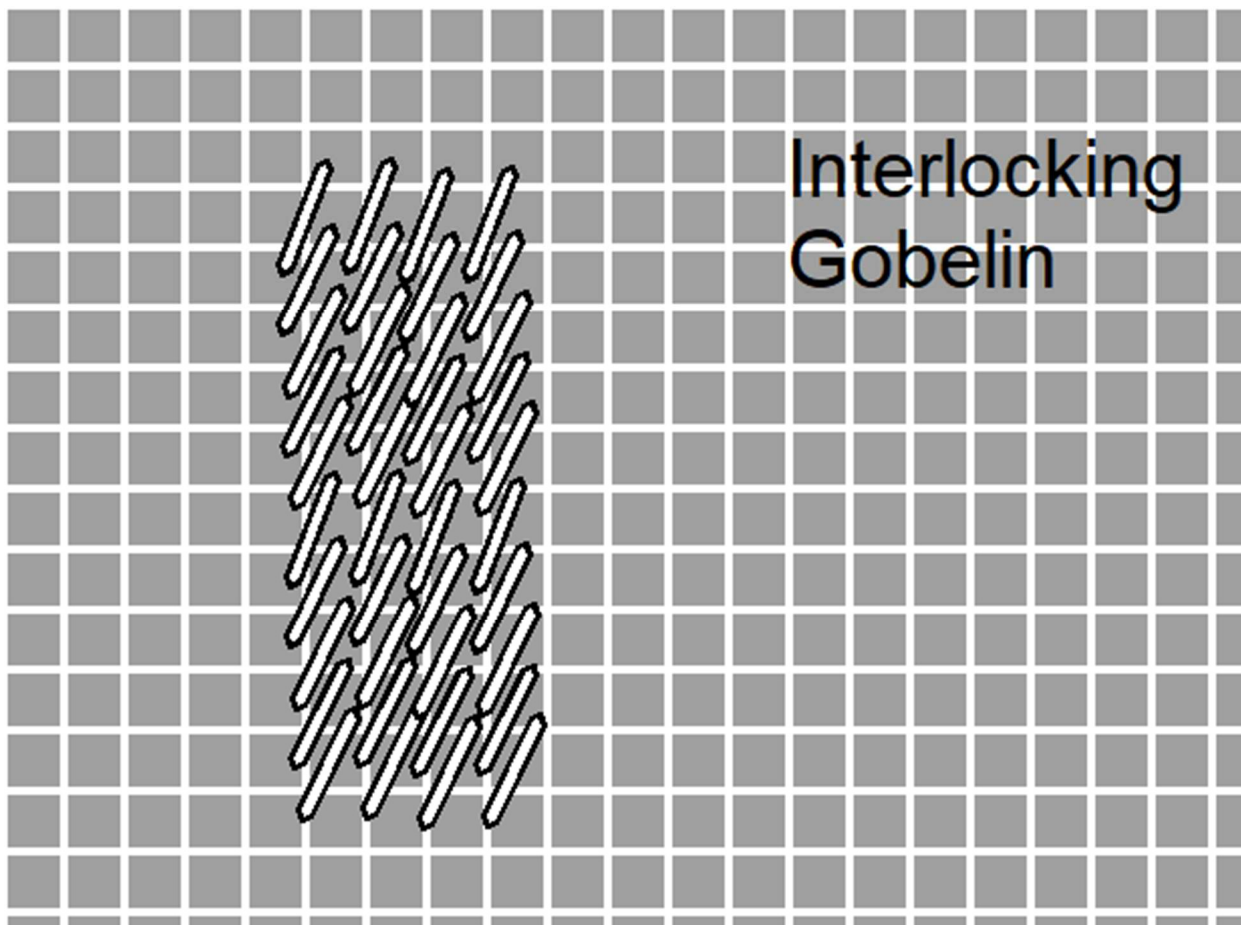
Stitch: Long and Short

Cut the little plastic curlers in half lengthwise then cut each half in half and attach after you long and short the hair.

Eggs

Thread: Mandarin Floss M802, M812, M842

Stitch: Interlocking Gobelin



NOTES: Trapunto Eggs

Needlepoint Obsession
UNLEASH YOUR CREATIVITY.



"Mother Cluckers" by Will Bullas
Stitch Guide by Laura Glazier