

Turkey Stitch Guide

CBK Needlepoint Collection
Stitch Guide



Emily S. Garcia Design • Turkey Canvas • ESG-PL 04

Turkey Fiber Guide

VINEYARD SILK

C 004	CHATEAU	C 037	TOASTED ALMOND
C 038	BARK	C 040	CASHMERE
C 046	OLD GOLD	C 050	TOPAZ
C 065	MARTINI	C 111	JET BLACK
C 163	CRÈME BRULEE	C 179	MOJITO
C 190	CASHEW		

IMPRESSIONS

0057	1032	1072	1130
1131	1142	1144	2010
2032	2033	2040	4013
5013			

SPLENDOR

S 902	LITE GOLDEN BROWN
S 1094	SONOMA BROWN

SILK LAME

SL 31	COPPER	SL 35	BUTTERCUP
SL 45	DEEP ROSE		

PETITE ALPACA

AP 82	LITE BROWN	AP 83	BROWN
-------	------------	-------	-------

NEON RAYS

N 01	BLACK	N 100	BRASSY GOLD
------	-------	-------	-------------

VERY VELVET

V 601	BLACK	V 615	LITE GRAY
V 616	DARK GRAY		

WISPER

W 105	HAZELNUT
-------	----------

KREINIK

#8 BRAID	3215
#12 BRAID	005HL
#12 BRAID	3215

THREAD WORX

FLOSS OVERDYED	
1028	

MILL HILL BEADS

23B	252
21A	284

RIBBON FLOSS SHIMMER

142F

Please do not feel constrained by the stitches or fibers used.

Use scraps when possible for the smaller areas and/or use your favorites when possible. This stitch guide is only one person's suggestion. There is no right or wrong way to stitch your canvas.

Turkey Stitch Guide

#1 BACKGROUND

Vineyard Silk C-111
Impressions 1032
Stitch- Reverse Scotch

#2 PINK BORDER

Impressions 2010, 2040
Stitch- Slanted Gobelin- slant each side to the middle

#3 BACKGROUND BEHIND TURKEY

Impressions 1144
Stitch- Basketweave

#4 TURKEY FEATHERS- start at right bottom feather & work counter clockwise

Kreinik #12 braid 3215
Vineyard Silk C 038, C 040, C190
Stitch- tent, modified scotch were possible slant outward when possible

#5 TURKEY FEATHER

Impressions 4013
Silk Lame SL 45
Stitch- Basketweave Twill bkgd.
Pink area- French knot the center stitch- tent stitches around and then bead

#6 TURKEY FEATHER

Impressions 5013
Silk Lame SL 35, SL 31
Stitch-Impressions work interlocking gobelin over 3
Tent stitches for the silk lame

#7 TURKEY FEATHER

Splendor S 1094, S 902
Impressions 2033
Stitch- Work S 1094 slanted gobelin, slant toward the Center;
S 902 Greek;
2033 & S 1094 Cross stitch

#8 TURKEY FEATHER

Vineyard Silk C 040
Impressions 1130
Silk Lame SL 31
Stitches- Work C 040 reverse scotch; 1130 tent
SL 31 tent

#9 TURKEY FEATHER

Impressions 5013
Silk Lame SL31
Stitches- Work 5013 diagonal mosaic; SL 31 mosaic
Bead the yellow stitch

Turkey Stitch Guide

#10 TURKEY FEATHER

Impressions 4013

Silk Lame SL 31

Kreinik #8 braid- 031

Stitches - 4013 slanted gobelin; SL31 tent

#8 cross stitch over 2

#11 TURKEY HAT

Petite Velvet - V 601- slanted gobelin

Petite Velvet - V 615 - cross stitch

Petite Velvet - V 616 - tent

Band- Kreinik #12 002 - tent

Velvet V 615 and V 602 - long cross stitch over entire length

#12 TURKEY FACE

Wisper W 105 - Interlocking gobelin

Petite Alpaca AP 82 - tent outline

Nose - Neon Rays N100 - padded - stitch horizontal, vertical and then horizontal

Eyes - Kreinik #12 005HL - cross stitch

Bowtie - Ribbon Floss 142F - tent

Neon Rays NP 01 - tent and bead

Body - Petite Alpaca AP 82 Interlocking Gobelin

Petite Alpaca AP 83 Outline- tent

Wisper W 105- mosaic

Feathers - Impressions 2032 - Basketweave

Impressions 1142 - Basketweave

Impressions 1131 - Basketweave

Legs - Impressions 1032 - tent

Overdyed floss 1028 - slant outward

Socks - Impressions 2040 & Vineyard Silk C 004 - Slant stitches outward

Boots - Petite Velvet - V 601, V 615, V 616

Slant stitches outward, tent and slanted gobelin

#13 FLOWERS

Vineyard Silk C - 046 Flying Cross

Vineyard Silk C- 037 4 Way Continental

Vineyard Silk C- 050 Knotted Stitch

Vineyard Silk C- 163 Mosaic

#14 INSIDE FLOWERS

Petite Velvet V 601 - Tent

Petite Velvet V 616 - T-Stitch

Impressions 0057 - Tent

Bead the 4 center stitches

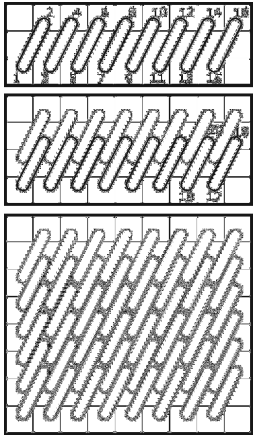
#15 LEAVES

Vineyard Silk - C 179

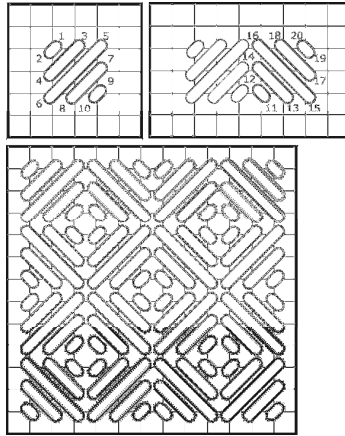
Vineyard Silk - C 065

Slanted gobelin- slant in the direction that seems suitable

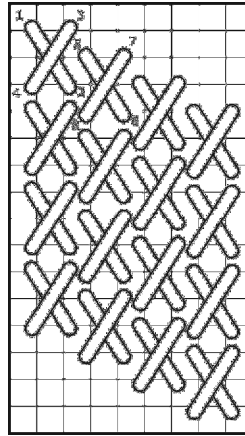
Turkey Stitch Guide



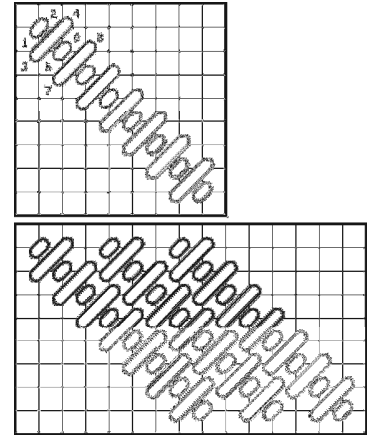
**Interlocking
Gobelin**



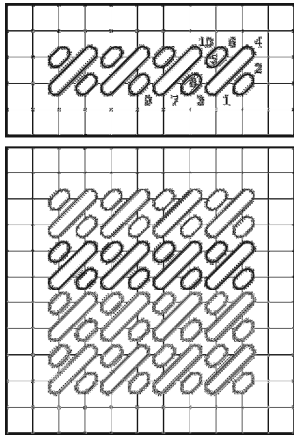
Reverse Scotch



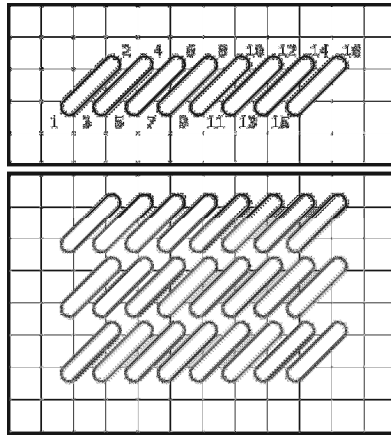
Flying Cross



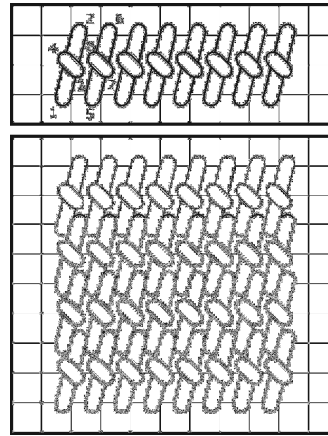
Diagonal Mosaic



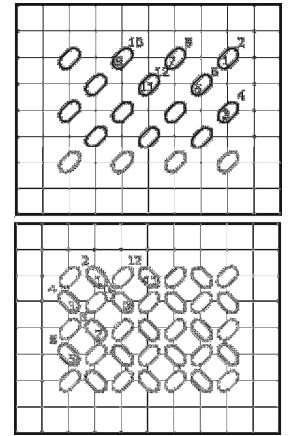
Mosaic



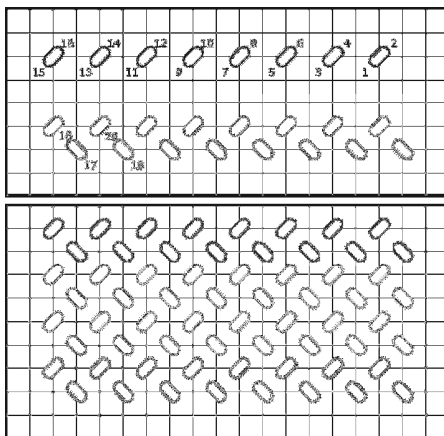
Slanted Gobelin



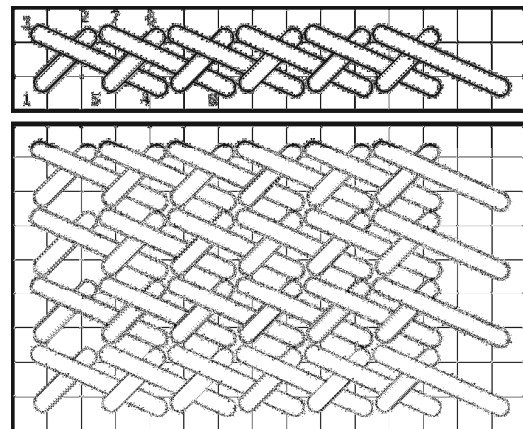
Knotted Stitch



**Four Way
Continental**



T Stitch



Greek