

A Ride Home

Canvas MN-PL10

by

Michele Noiset

for

CBK Designs

Stitch and Thread
Suggestions

by

Cynthia Thomas



Copyright 2014, Cynthia D. Thomas, 408 Native Oak St., Ingram, TX. All rights reserved. No portion of this guide may be reproduced in any manner without the written permission of the author. E-mail: needleartisan@hotmail.com

I used one skein, card or spool unless indicated otherwise.

Access Commodities

Trebizond Silk

- 4012 – Bright Scarlett
- 4014 – Medium Scarlett
- 4015 – Medium Dark Scarlett
- 4017 – Dark Scarlet

Amy's Keeping Me in Stitches

Burmilana

- 3453 – Pale Lake Blue
- 3601 – Very White
- 3697 – Pale Peacock
- 3873 – Medium Clear Blue
- 3910 – Light Clear Blue

Anchor Manufacturing Co.

Floss

- 87 – Medium Orchid
- 110 – Medium Lavender
- 246 – Very Dark Grass Green
- 292 – Very Light Jonquil

DMC Manufacturing Co.

Floss

- Blanc
- 310 - Black
- 321 - Red
- 704 – Bright Chartruese
- 823 – Dark Navy Blue (2)
- 825 – Dark Blue (3)

Light Effects

- E3849 - Aquamarine

Helby Imports/Beadsmith

- Swarovski Crystals 4mm Rounds
- 500004FIOP – Fire Opal (73)

Kreinik Manufacturing Co.

#4 Braid

- 1432 – Ice Blue

#8 Braid

- 005HL – Black Hi-Luster
- 032 - Pearl

051HL - Sapphire

060 – Midnight (2)

#12 Braid

032 - Pearl

092 – Star Pink

556 – Fly By Night

3214 – Blue Zircon

Planet Earth Fibers

Pepperpot Silk

17 – Chili

24 – Raspberry

83 – Kiwi

112 – Water

116 – Blueberry

124 - Violet

Silk Opal

082 - Bermuda

105 – River

Rainbow Gallery

Silk Lame' Braid for 18 Count

87 – Bark

144 – Christmas Red

157 - Tangelo

Splendor

863 – Brite Royal Blue

875 – Dark Violet

954- Dark Teal

1024 – Dark Jade

Renaissance Designs

Sprinkles

76 - Marine

Sundance Designs

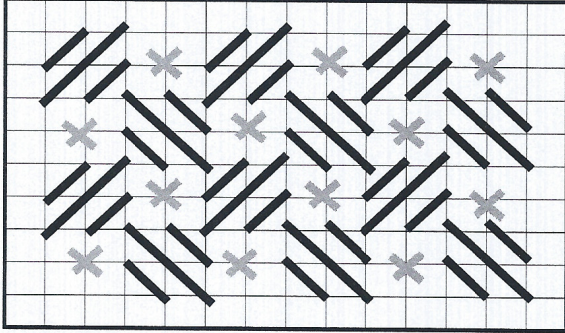
Beads size 14/0

647 Dark Rainbow Green

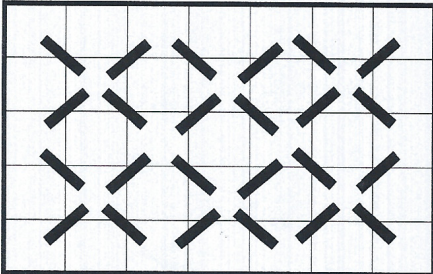
Miscellaneous

6mm Blue Jingle Bells (8)

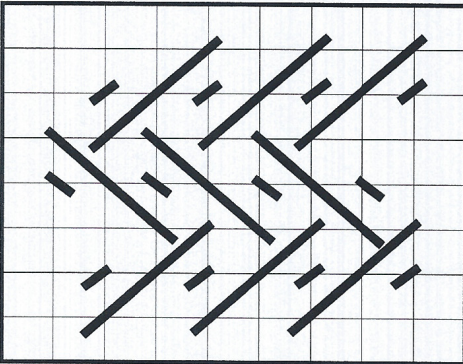
Sky: DMC Floss 823 or 825 – 4 ply (black lines); Kreinik #8 051,HL, 060 or 032 – 1 strand (gray cross stitch) – Criss Cross Hungarian. Note: I worked all of the diagonal lines first, then put in the Kreinik #8 032 scattering them around the canvas, then filled in the rest of the cross stitches with Kreinik #8 060. Where the light blue and dark blue in the sky met, I blended the DMC Floss 823 and 825 to soften the transition.



Moon – Kreinik Braid #8 032 – 1 strand – 4-way Continental.



Snow – Kreinik #12 032 – 1 strand or Sprinkles 75 – 1 strand – Alternating Nabuko.



Bears: Nose: DMC Floss 310 or Blanc – 4 ply – Basketweave.

Ear: These are worked from the inside out.

Mom: Inside Splendor 823 – 4 ply – Basketweave.

Burmilana 3697 – 3 ply , then 3601 – 3 ply – Interlocking Gobel.

Outside edge – Burmilana 3873 – 4 ply – Continental.

Baby: Inside - Splendor 823 – 4 ply – Basketweave.

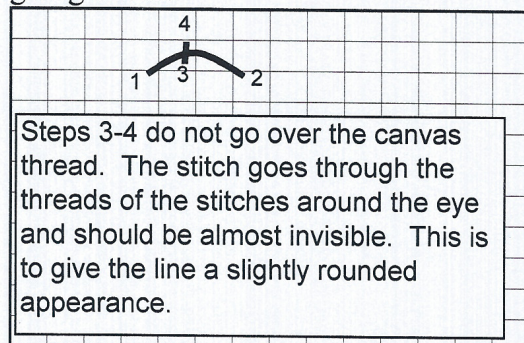
Burmilana 3679 – 3 ply – Interlocking Gobel.

Burmilana 3873 – 3 ply – Interlocking Gobel.

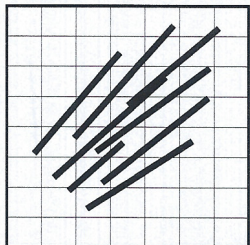
Outside edge – Burmilana 3601 – 3 ply – Interlocking Gobel.

Mouth: Burmilana 3873 – 4 ply – Continental.

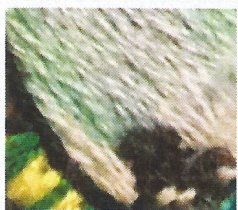
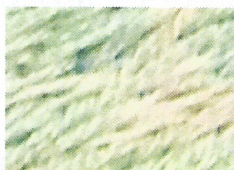
Eyes: DMC Floss 310 – 4 ply – Freeform Fly. Note: Mama's eye is tacked with curve going up and baby's eyes with the curve going down.



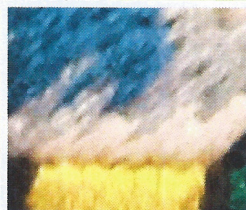
Fur: Burmilana 3453, 3601, 3697, 3873 or 3910 – 1 strand – Long and short. Note: Mom’s fur and Baby’s feet and tail slant in direction shown below. Baby’s fur on face slants from lower right to upper left.



Mom

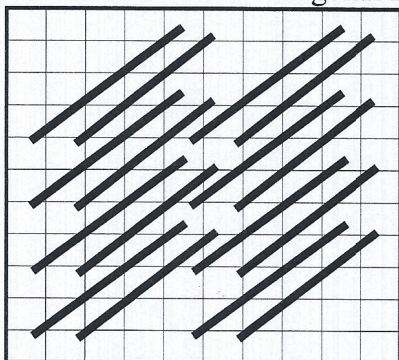


Baby's face

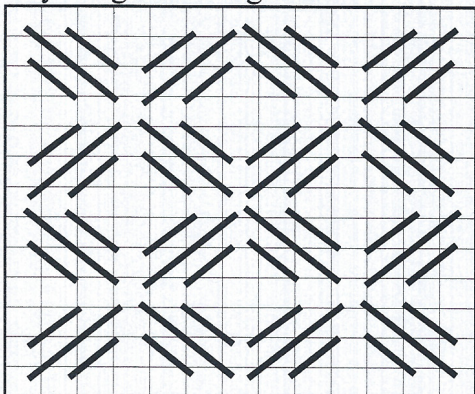


Baby's feet

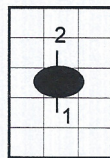
Blanket: Red – Trebizond Silk 4012, 4014, or 4017 – 1 strand – Diagonal Double Brick.



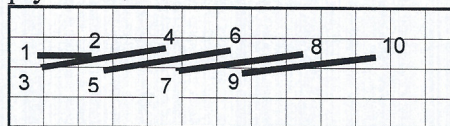
Green – Splendor 954 or 1024 – 3 ply – 4-way Diagonal Hungarian.



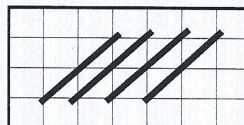
Attach Sundance Beads 14/0 647 in center of each diamond.



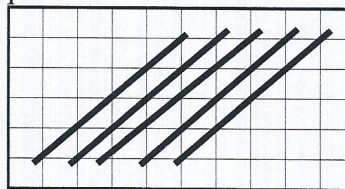
Top edge (white) – DMC Floss Blanc – 4 ply – Slanted Gobelin



or DMC Floss Blanc – 3 ply – Outline..



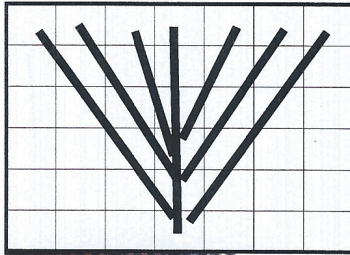
Bottom edge – Silk Lame’ Braid 87, 114 or 144 – 1 strand – Slanted Gobelin to cover paint.



Outer Border – Splendor 863 or 875 – 4 ply – Basketweave. Note: I covered up the designs and then stitched over the basketweave using Kreinik #4 1432 – 1 strand – Outline and the picture as a guide.

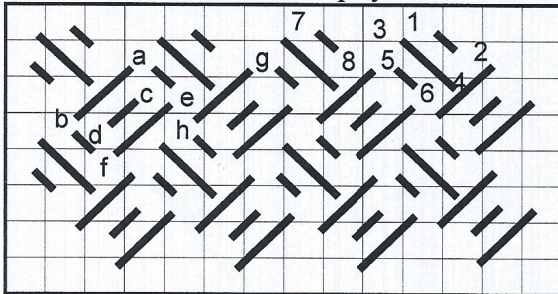
Lines on either side of outer border:
 Black – Kreinik #12 005 – 1 strand;
 Pink – Kreinik #12 092 – 1 strand;
 Turquoise DMC Light Effects E38489 – 3 ply or Purple Kreinik #12 556 – 1 strand – Outline.

Fringe – Silk Opal 105 – 1 strand – Slanted Satin towards center of each triangle with 1 straight stitch over the center. Note: This is just an idea of the stitch, every triangle is different.



Fringe in front of Mama is diagonal stitches to fill the space.

Mama's hat: Red Stripes – Trebizond Silk 4015 – 1 strand – Serendipity.

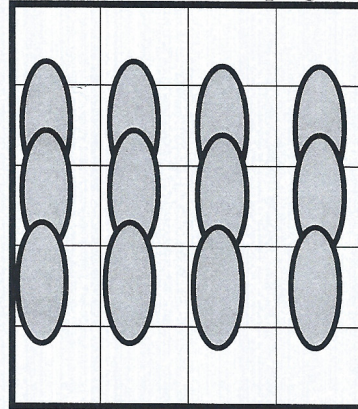


Blue Stripes - Splendor 863 – 4 ply – Basketweave. Note: Work motif with Kreinik #4 1432 following instructions for Outer Border.

White line – DMC Floss Blanc – 3 ply – Outline.

Baby: Sweater – Pepperpot Silk 17, 24, 83, 112, 116, or 124 – 1 strand – Split Stitch.

Hint: I used the smallest needle I could get the thread into. I turned my canvas 90° so the baby bear was upright.



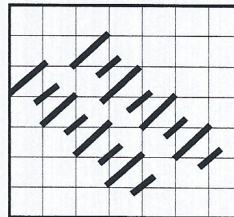
Pants – DMC Floss 321, 704, Anchor 87 or 110 – 4 ply – Basketweave.

Scarf: Anchor Floss 292 or 246 in following stitches:

Area around neck – 4 ply – Slanted Satin Stitch.



Below front paw – 3 ply – Diagonal Mosaic. Match the thread to the color of the canvas.



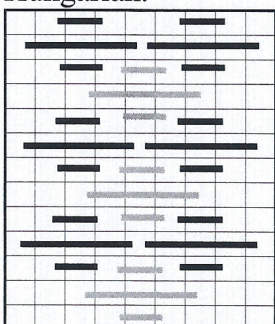
Below back paw – 3 ply – Slanted Gobelin.

Yellow spot below front paw – Anchor 292
– 4 ply – Slanted Gobelin.

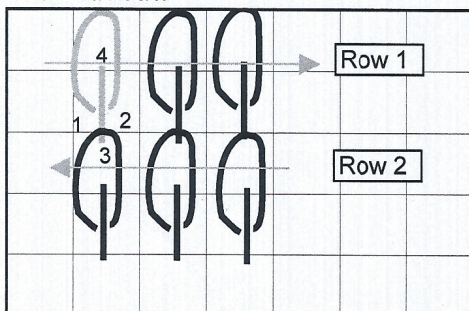
Outline around scarf at neck - DMC Floss
310 – 3 ply – Outline.

Rest of outline around scarf – DMC Floss
310 - 4 ply – Continental and Basketweave.

Hat: Silk Opal 082 – 1 strand – Horizontal
Hungarian.



Fur on Hats: Mama – Burmilana 3601 – 4
ply – Jump-Through-The-Loop Turkey
Work uncut.



Baby – Burmilana 3453, 3601, 3873 and
3910 – 1 strand of each all at once - Jump-
Through-The-Loop Turkey Work cut.

Attachments: Sew on 10mm blue jingle
bells at end of fringe on Mom's blanket.

Attach 4mm Swarovski Round Crystals Fire
Opal for orange squares on blanket.