

SANTA WITH A HEART BORDER

**SANTA WITH A HEART BORDER**



**STITCH GUIDE**

**by SuZy Murphy**

**Emily Garcia**

**Distributed by CBK NEEDLEPOINT**



## SANTA WITH A HEART BORDER

Stitches and Threads chosen by Suzy Murphy

A few thoughts and suggestions before you begin.

The strands should all be separated and put back together for a smoother look and better coverage.

The strands recommended are the ones I used, so you may need to adjust them for the way you stitch.

In most cases the graphs are not counted from the canvas, so the actual counts you use may be different.

All of the supplies were available when I stitched this piece. However, I cannot guarantee they will be at the time you purchase the canvas. If a thread or color is no longer available, you will need to find the closest substitute.

No part of this Stitch Guide may be reprinted or reproduced without permission from Emily Garcia or SuZy Murphy.

Have fun and Happy Stitching.

Suzy Murphy



## SANTA WITH A HEART BORDER

### VINES

ThreadworX #5 Perle Overdye  
5063 - Irish Cream

Stem Stitch the lines and then work the leaves with a single chain stitch.

### BORDER

Mandarin Floss

M801 - Black

M884 - Medium Sage

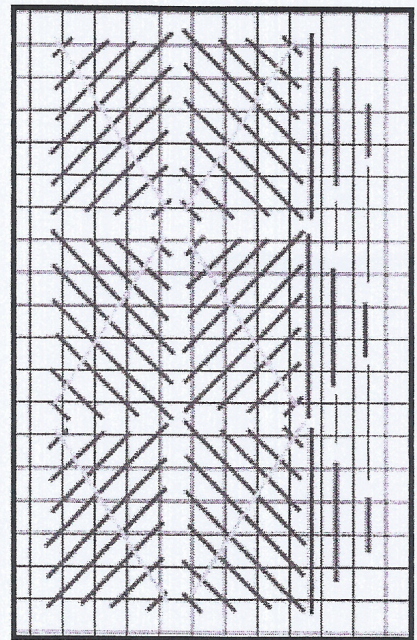
ThreadworX Overdye Perle #5

5115 - Coffee n' Cream

With 3 strands of the Mandarin work Cross Stitch Scotch, alternating the direction of the stitches.

Next fill in with the red diamonds also with the Mandarin Floss.

Finally work the small center straight stitches over 2 and 4 canvas threads with the Perle.



**BORDER**

### 4 LARGE HEARTS IN THE CORNERS

DMC Perle Cotton #8 - #321 - Red

Mill Hill

Large Red Folk Heart - 4

Basketweave the heart area and add the buttons.

## SANTA WITH A HEART BORDER

### SANTA'S SUIT

Petite Very Velvet

V632 - Brite Red

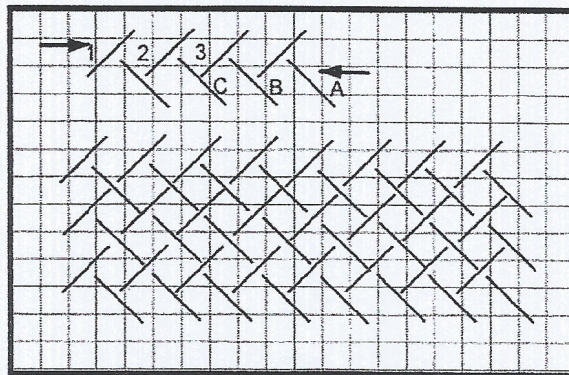
V612 - Cherry Red

ThreadworX - Vineyard Silk Overdyed

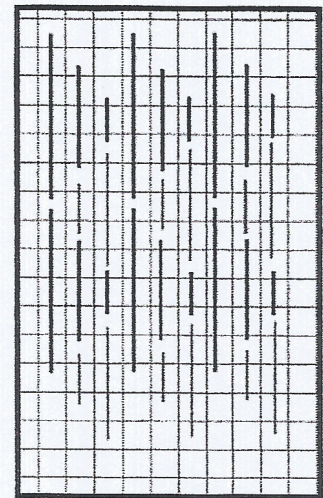
V140 - Reds

Vertical Milanese. Work with fairly short lengths of the velvet.

Diagonal Weave with the Silk.



DIAGONAL WEAVE



VERTICAL  
MILANESE

### SOLES OF BOOTS

8 Strand Treasure Braid - TR85 - Black

Elongated Continental

### BEARD

Wisper - W88 - White

Petite Alpaca - P51 - White

Baby Fluffy Fleece - FB14 - White

Using 1 strand of Wisper and Petite Alpaca in the needle, Basketweave the tan areas of his beard and mustache.

Couch the Baby Fluffy Fleece on the other areas, holding it in place with one strand of the Designer's Dream.

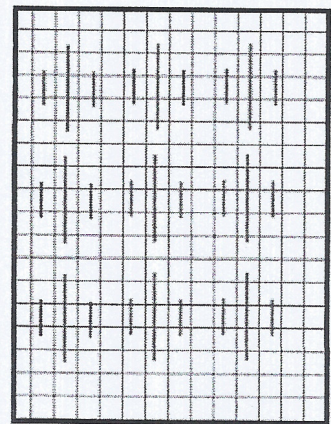
## SANTA WITH A HEART BORDER

### BACKGROUND

ThreadworX #5 Perle Overdye  
8115 - Coffee n' Cream - 2 skeins

Darning Pattern- see graph. I recommend doing the background before the border. This way you will have a place to move the darning thread from one row to the next. (If you do not cut the Perle, you can work 2 rows of the longer areas with one thread.)

To work a darning pattern, start at the top/bottom of the canvas and work vertically. The thread showing through from the back is as important as the thread on top of the canvas. That is the reason to have a place to move from row to row.



BACKGROUND

### SANTA'S FACE AND EYES

Splendor  
S1098 - Powder Bronze  
S884 - Baby Pink  
8 Strand Treasure Braid  
TR85 - Black

Work 1 long vertical stitch over the center, and then work long crosses over this.

Basketweave his face with 4-6 strands of the S1098. Pad is nose and then work long stitches over the padding with 4-6 strands of the S884.

## SANTA WITH A HEART BORDER

### SANTA'S HAT

Vineyard Silk

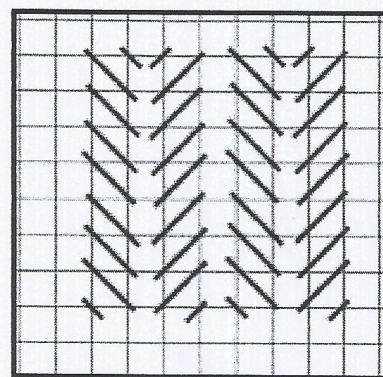
C134 - Lipstick

C168 - Claret

Faux Fur - FF11

With 1 strand, work Reverse Elongated Cashmere. Change color at each stripe and follow the stitch not the paint.

Work straight stitches for the trim on his hat and the pompom. Keep these stitches loose. You may want to brush these areas when the rest of the piece is finished.



REVERSE ELONGATED  
CASHMERE

### TRIM

Vineyard Silk

C168 - Claret

C092 - Patriot Blue

Sundance Beads

Size 14 - 431 - Green

Just Another Button Company

33095 - Small hearts - 4

Basketweave with the red Vineyard Silk.

Straight Stitches with the blue Vineyard Silk.

Add beads and hearts.

### SANTA'S BOOTS AND MITTENS

Fuzzy Stuff

FZ01 - Gray

FZ02 - Black

Designer's Dream

D44 - Lite Dove Gray

D01 - Black

Use 1 strand of each thread in the needle. Pad the centers of the boots.

Work long stitches over all. Brush lightly when the piece is finished.

## SANTA WITH A HEART BORDER

Vineyard Silk

C168 - Claret

C092 - Patriot Blue

C134 - Lipstick

## RAINBOW GALLERY

Petite Very Velvet

V632 - Brite Red

V612 - Cherry Red

Splendor

S1098 - Powder Bronze

S884 - Baby Pink

8 Strand Treasure Braid

TR85 - Black

Faux Fur - FF11

Fuzzy Stuff

FZ01 - Gray

FZ02 - Black

Designer's Dream

D44 - Lite Dove Gray

D01 - Black

Wisper - W88 - White

Petite Alpaca - P51 - White

Baby Fluffy Fleece - FB14 - White

Mandarin Floss

M801 - Black

M884 - Medium Sage

## THREADWORKX

#8 Perle Overdye

8115 - Coffee n' Cream

2 skeins

#5 Perle Overdye

5063 - Irish Cream

5115 - Coffee n' Cream

Vineyard Silk Overdyed

V140 - Reds

## SUPPLY LIST

DMC Perle Cotton #8 - #321 - Red

Mill Hill

Large Red Folk Heart - 4

Sundance Beads

Size 14 - 431 - Green

Just Another Button Company

33095 - Small hearts - 4